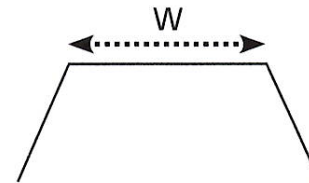
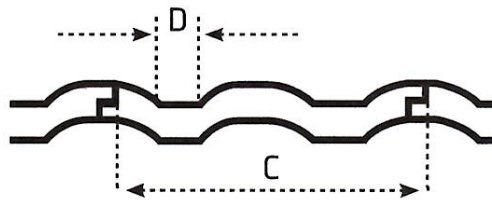


# TILE SPECIFICATION GUIDE



## CONCRETE TILE PROFILE



**Tile Valley**

- **C** - Exposed tile width for both 300 & 310 Series (refer to tables below). 300 Series generally measures 298mm approximately & 310 Series generally measures 308mm approximately.
- **D** - Exposed tile water course.
- **W** - Tile valley opening width. Supplied folded from Standard 200mm width mesh.

### 300 SERIES

GPS PROFILE	TILE MANUFACTURE	PROFILE NAME	STATES
Tudor	Monier	Tudor (Also known as 100)	NSW, ACT, QLD, VIC
Waverley	Monier	Waverley	NSW, ACT, QLD, VIC
	Continental	Bolero	
300 x 25	Monier	Elebana	NSW, ACT, QLD, VIC, SA, WA, TAS
300 x 35	Bristile	Hacienda	NSW, ACT, QLD, VIC, SA, TAS
	Pioneer	Hacienda	
	Hume	Hacienda	
300 x 60	Monier	Centurion	NSW, ACT, QLD, VIC, SA, WA, TAS
300 x 70	Reliance/ Monier	Roman	NSW, ACT, QLD, VIC, SA, WA, TAS
	Boral/ Pioneer	Ranch	NSW, ACT, VIC
300 x 180	Bristile	Chateau	NSW, ACT, QLD
	Hume / Besser	Chateau	
300 x 180Y	Bristile	Yeoman (Lined & smooth)	NSW, ACT, QLD, VIC, SA, TAS
	Pioneer / Besser	Yeoman (Lined & smooth)	NSW, ACT, QLD

### FLAT

GPS PROFILE	TILE MANUFACTURE	PROFILE NAME	STATES
Flat Tile	All	All/ Shingle	All

### 310 SERIES

GPS PROFILE	TILE MANUFACTURE	PROFILE NAME	STATES
310 x 25	Boral	Maquarie	NSW, ACT, VIC
310 x 60	Boral/ Clark	Windsor	NSW, ACT, VIC, QLD
	Boral	Capri	SA

Gutter Protection Systems Pty Ltd  
 Unit 4/50 | Hooper's Rd | Kunda Park | Q | 4556  
 PO Box 746 | Buddina | Q | 4575

**D** (07) 5450 1280 (Head Office)  
**P** 1300 137 280 (National)  
**F** (07) 5450 1260

**E** info@gutterprotectionssystem.com.au  
**W** www.gutterprotectionssystem.com.au  
 ABN 38 153 028 365